

Creating Jobs in Fragile Situations

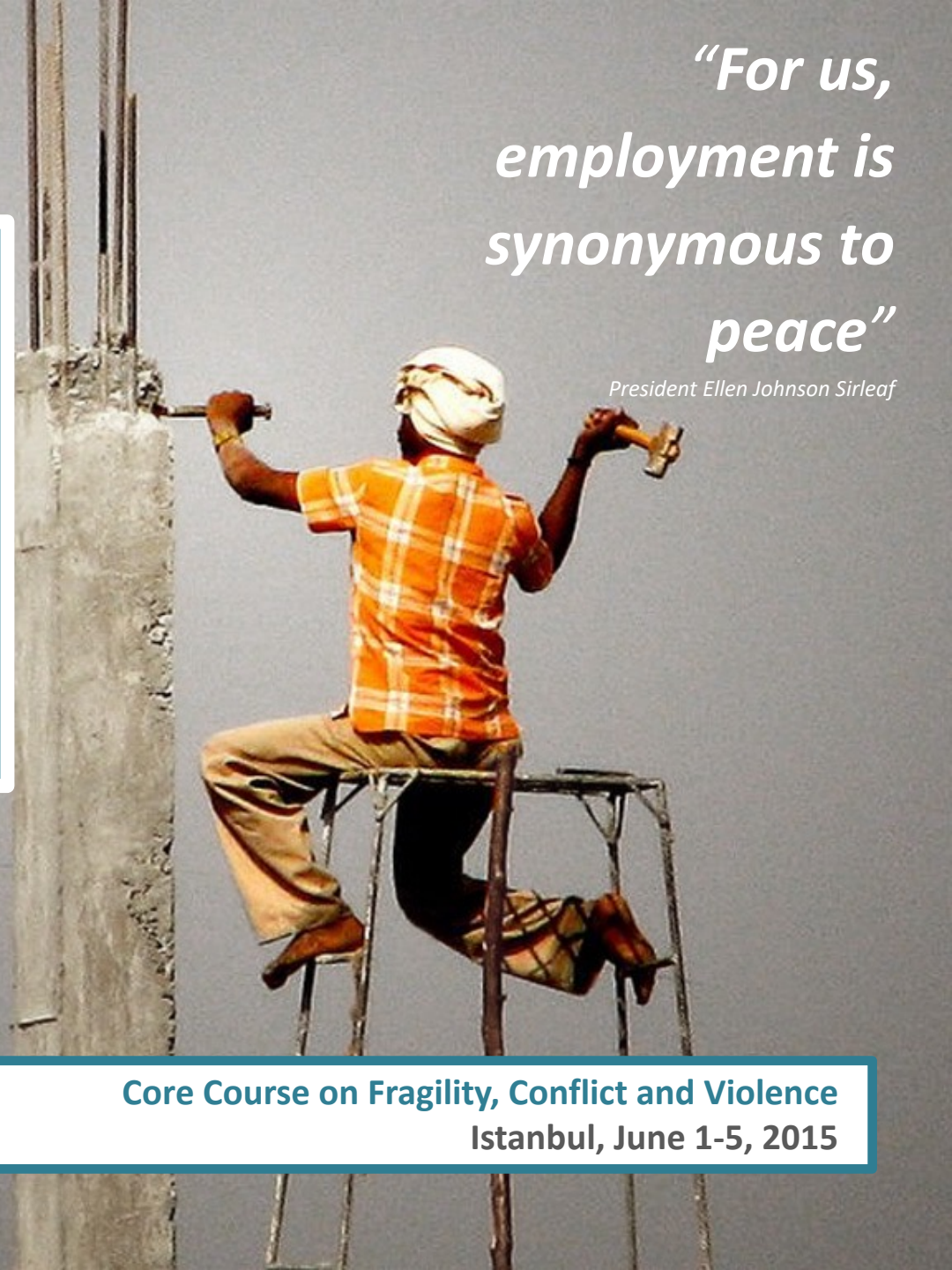


WORLD BANK GROUP
Fragility, Conflict & Violence

*“For us,
employment is
synonymous to
peace”*

President Ellen Johnson Sirleaf

Core Course on Fragility, Conflict and Violence
Istanbul, June 1-5, 2015



Barriers to private investment for job creation in FCS

“Weak governance, ineffective institutions, armed groups, high violence, intense conflict, slow growth, degraded infrastructure, economic and policy uncertainty, exclusive politics, severe inequalities, ethnic rivalry, weak rule of law, corruption, poor government legitimacy, and the lack of will or capacity to provide basic services (CSIS 2013).”

Who wants to invest in that environment?

